



LIKOVNI SAT 7

Sadržaj likovne mape



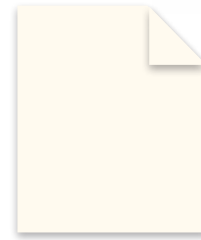
akvarel-papir
9 listova



crtaći papir
5 listova



**sulfitni papir
(bijeli)**
2 lista



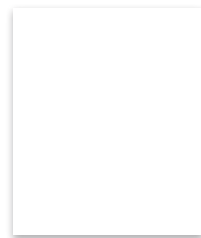
**celulozni papir
(chamois)**
2 lista



**papir koričar
(smeđi)**
1 list



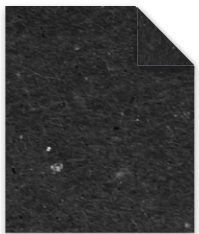
**papir koričar
(svjetloplavi)**
1 list



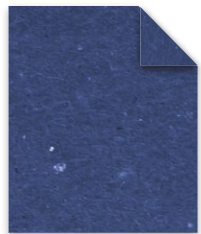
**bijeli bezdrvni
karton (hamer)**
1 list



**mikrovalna
ljepenka (natur)**
1 komad



**papir koričar
(crni)**
3 lista



**papir koričar
(tamnoplavi)**
1 list



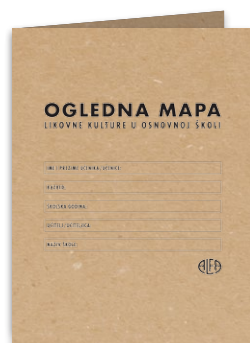
**mikrovalna
ljepenka (bijela)**
1 komad



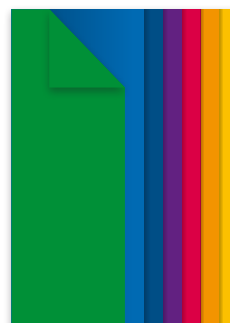
paus-papir
1 list



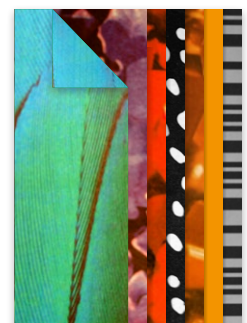
**linoleum
(bez ftalata)**
1 komad



ogledna mapa
1 komad



**obostrani
kolaž-papir**
17 listova



**obostrani
fotoraster-papir**
10 listova